



# Microsoft Windows 7 USB Port Driver Installation Instructions

## Introduction

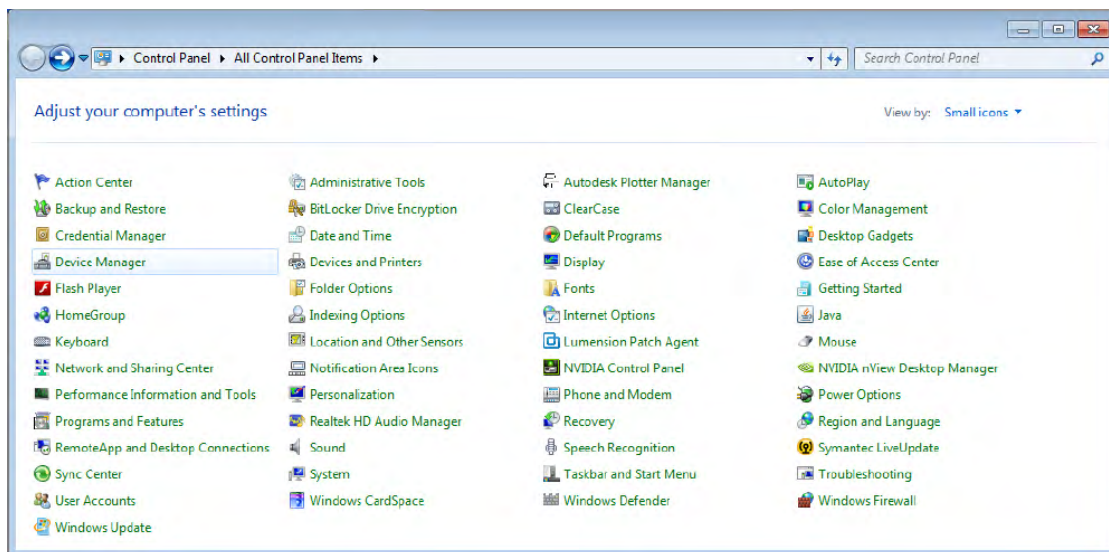
The following instructions for USB driver installation are specifically for the Microsoft Windows® 7 operating system. Some steps may be different and some screens may be changed for other Windows operating systems.

These instructions apply to the following relays:

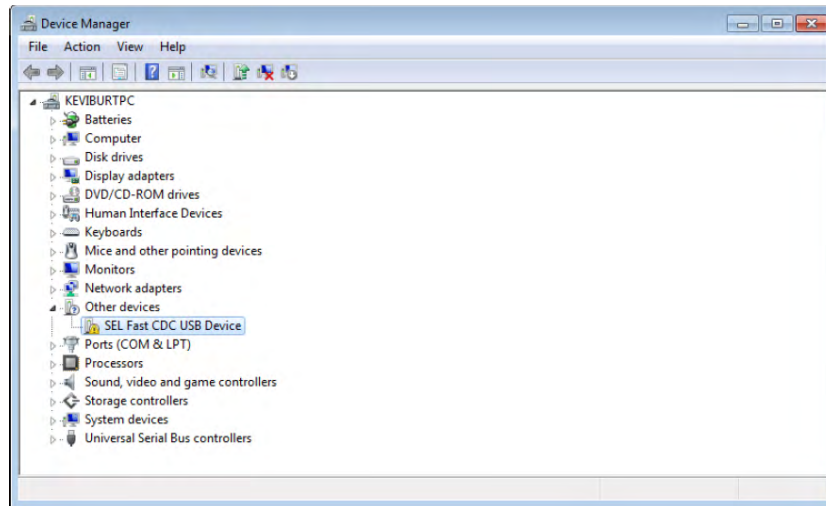
- SEL-311C
- SEL-351-5, -6, -7 Protection System
- SEL-351A Protection System
- SEL-351RS Kestrel
- SEL-351S Protection System
- SEL-651R-2
- SEL-T400L

## Installation

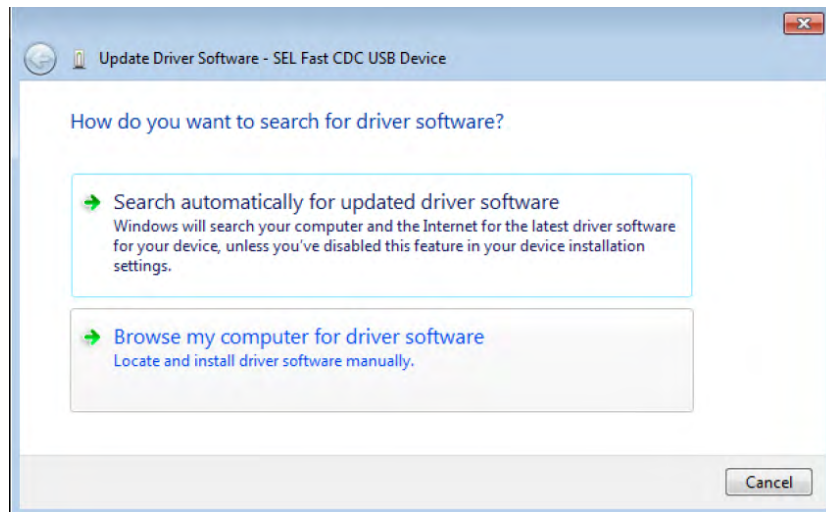
- Step 1. Retrieve the USB driver file “SEL Fast CDC USB Device.INF” from the appropriate product page on the SEL website (selinc.com), from the corresponding Product Literature CD, or from the ACSELERATOR QuickSet® SEL-5030 Installation CD. Place the INF file in any convenient directory, such as C:\SEL\Drivers\Relay\_USB\.
- Step 2. Connect the relay to your PC with an SEL-C664 cable, or any standard A-to-B USB cable. Your PC will recognize that a new device has been connected, and will likely not be able to locate the proper driver. If a **Found New Hardware Wizard** is activated, close the wizard and continue with manual driver installation steps below.
- Step 3. Open the Windows Device Manager by selecting **Start > Control Panel** and then clicking **Device Manager**.



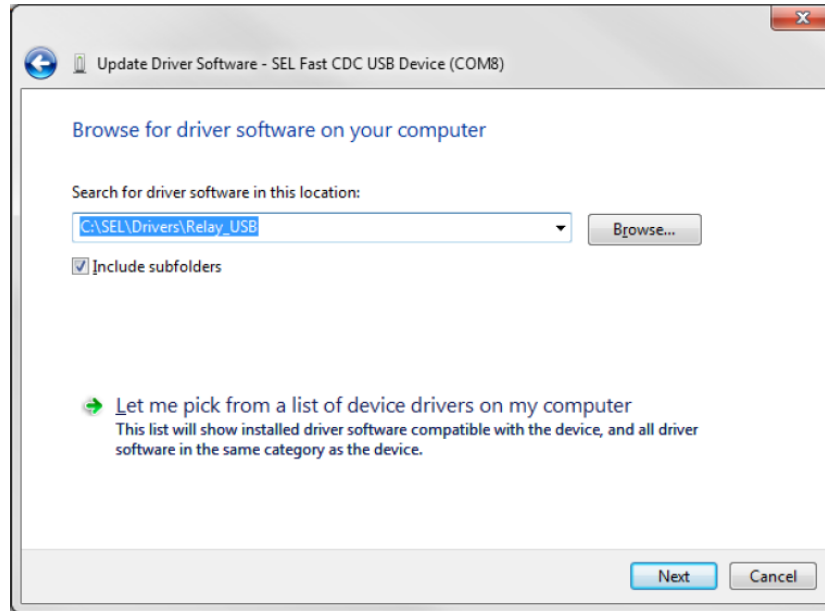
Step 4. Expand **Other Devices**, right-click on **SEL Fast CDC USB Device**, and select **Update Driver Software**.



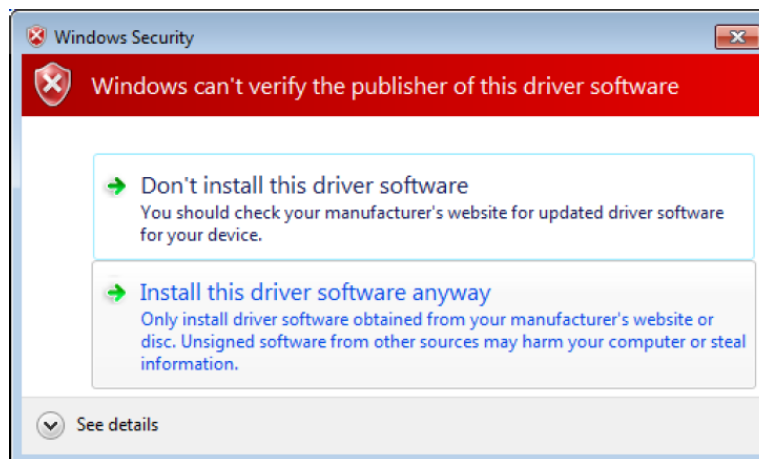
Step 5. Click **Browse my computer for driver software**.



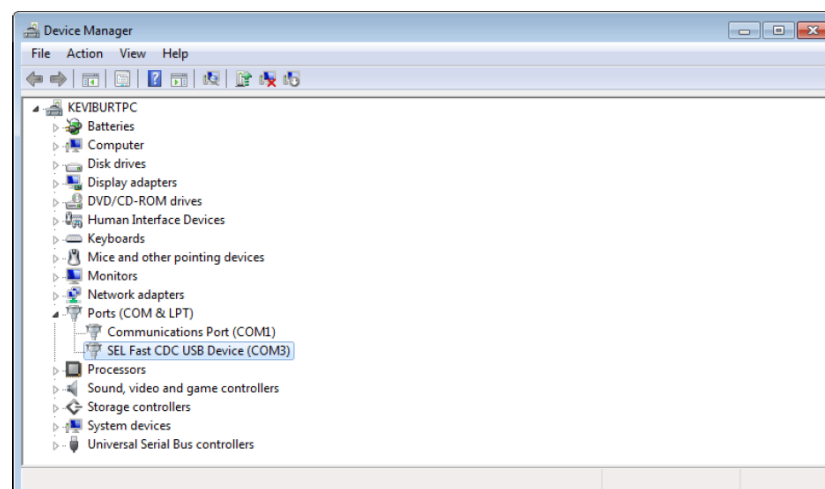
Step 6. Click **Browse** and select the location of the USB driver you copied in *Step 1*.



Step 7. If Windows Security alerts you of its inability to verify the publisher, select **Install this driver software anyway**.



Step 8. Verify that the driver has been successfully updated. The **SEL Fast CDC USB Device** should be listed in the **Device Manager** under **Ports (COM & LPT)**.



The USB port driver is now installed, and a new virtual COM port (e.g., COM 3) is ready for use. Device Manager updates the available COM ports each time a cable is inserted or removed.

To test the USB port and the newly installed driver, follow these steps:

- Step 1. Launch QuickSet, and select **Communications > Parameters** from the menu, or click the **Communications Parameters** icon from the opening screen.

For the SEL-311C, SEL-351, SEL-351A, and SEL-351S, see *Appendix C: PC Software* of the product instruction manual for more information on QuickSet. For the SEL-351RS Kestrel and SEL-651R-2, see *Section 3: PC Software* of the product instruction manual for more information on QuickSet. For the SEL-T400L, see *Section 8: Engineering and Operator Access Interfaces and Tools* of the product instruction manual for more information on QuickSet.

- Step 2. Select the new COM port created by the driver installation process, e.g., COM 3 in the screen capture.

Ignore other settings like parity and baud rate. They have no effect on how the USB port operates, and are only presented to the operating system to retain compatibility with certain applications.

- Step 3. Select **Communications > Terminal** from the menu, or click the terminal icon on the tool bar.

- Step 4. Log in to the relay normally.

The USB port should work similarly to an EIA-232 port, only much faster. See *Section 10: Communications* of the product instruction manual for a list of features available from the USB port.

**For additional technical assistance call +1.509.338.3838**

### WARNING

Operator safety may be impaired if the device is used in a manner not specified by SEL.

© 2012–2017 by Schweitzer Engineering Laboratories, Inc. All rights reserved.

All brand or product names appearing in this document are the trademark or registered trademark of their respective holders. No SEL trademarks may be used without written permission. SEL products appearing in this document may be covered by U.S. and Foreign patents.

Schweitzer Engineering Laboratories, Inc. reserves all rights and benefits afforded under federal and international copyright and patent laws in its products, including without limitation software, firmware, and documentation.

The information in this document is provided for informational use only and is subject to change without notice. Schweitzer Engineering Laboratories, Inc. has approved only the English language document.

This product is covered by the standard SEL 10-year warranty. For warranty details, visit [selinc.com](http://selinc.com) or contact your customer service representative.

### AVERTISSEMENT

La sécurité de l'opérateur peut être compromise si l'appareil est utilisé d'une façon non indiquée par SEL.

### SCHWEITZER ENGINEERING LABORATORIES, INC.

2350 NE Hopkins Court • Pullman, WA 99163-5603 U.S.A.

Tel: +1.509.332.1890 • Fax: +1.509.332.7990

[selinc.com](http://selinc.com) • [info@selinc.com](mailto:info@selinc.com)

